

### Anvil House

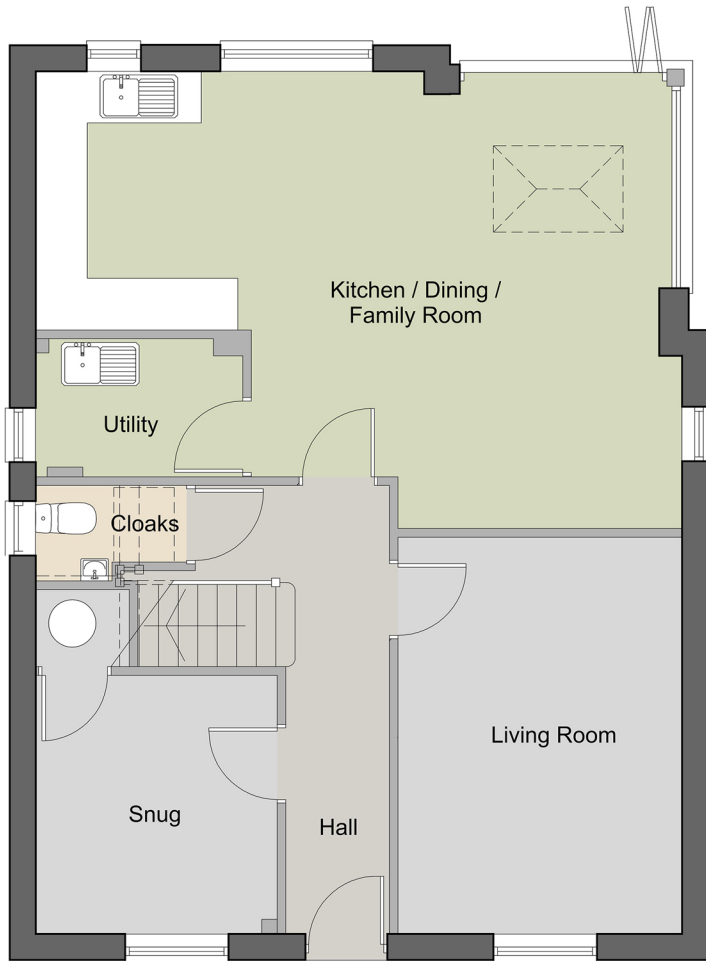
4 bed detached  
and 2 parking spaces



An elegant 4 bedroomed detached property with an impressive circa 1,500 sq ft of living space that provides on the ground floor a sitting room, separate study/snug and a stunning 24' long dining kitchen and family area with an adjoining orangery featuring aluminium triple bi- folding doors plus a useful utility room and a cloakroom/wc.

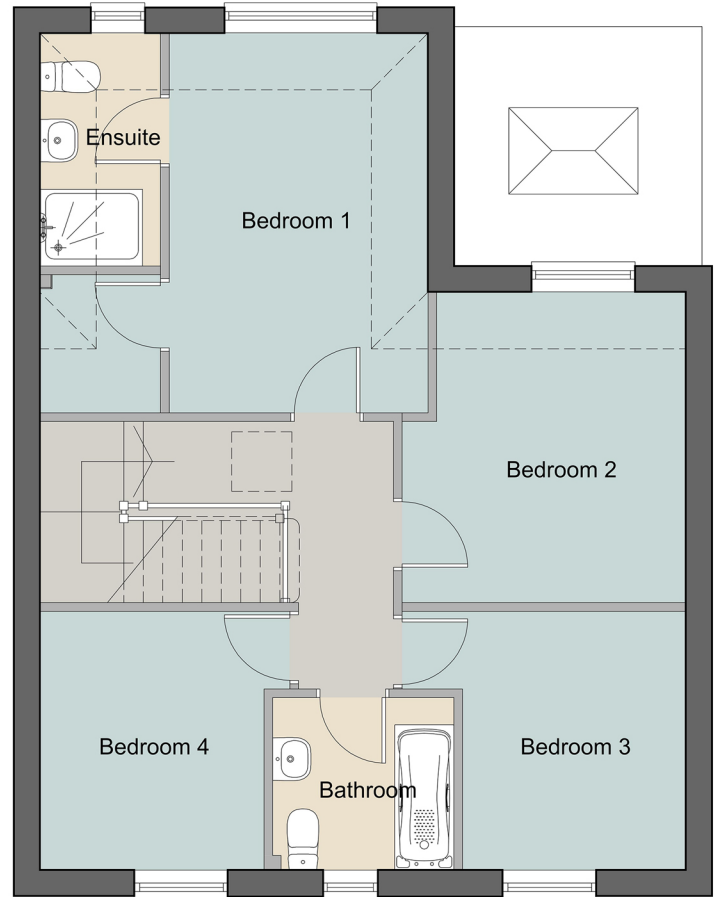
The first floor features a master bedroom with an en-suite shower room and a dressing room, 3 further bedrooms and a stylish bathroom.

Externally there is a block paved driveway to the side of the property, an enclosed rear garden and a sturdy storage shed with both power and light connected.



GROUND FLOOR

Living Room	3290 x 4060
Snug	2800 x 3000
Cloak Room	1750 x 2100
Kitchen	4500 x 3000
Dining / Family Room	4725 x 2000
Utility	2400 x 1600
Orangery	2425 x 2735



FIRST FLOOR

Bedroom 1	3000 x 4400
Ensuite	1400 x 2700
Dressing Room	1500 x 1600
Bedroom 2	3390 x 3600
Bedroom 3	2590 x 3000
Bedroom 4	2600 x 3000
Bathroom	2100 x 2000

**NOT TO SCALE - FOR ILLUSTRATION PURPOSES ONLY**

Measurements are approximated and taken from the widest point.

Ambleside Homes give notice that the property information, images and plans contained within this site and associated literature are for guidance purposes only and whilst as accurate as possible, are only representative and intended to give a general indication of the development or premises for sale. The developers reserve the right to change or vary any part of the development, specification or floor plans at any time. Dimensions shown are taken from plan and therefore may not necessarily correspond to actual or physical measurements of the rooms. The information provided does not constitute a contract part of a contract or warranty.

The photographs do not necessarily reflect the exact specification of each house and artists impressions have been used to show the proposed development in places.